

CAT-Segmentation: /var/lib/condor/execute/dir_3982995/ds/sub-03/sub-03_T1w.nii

Version: OS / Matlab / SPM12 / CAT12 / seg:
 Tissue Probability Map:
 Optimized Shooting Registration (regstr:0.5) to:
 affreg / APP / setCOM
 biasstr / samp / tol:
 LASstr / LASmyostr / GCUTstr / CLEANUPstr / BVCstr:
 WMHC / SLC / SRP / restype:
 Voxel resolution (original > intern; vox):

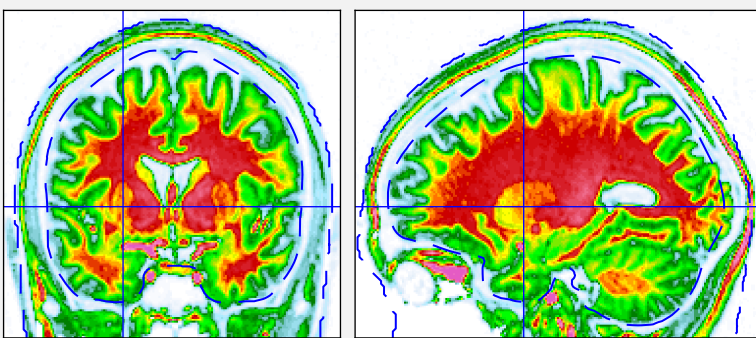
LINUX / 23.2 / 25.01.02 / 12.9 (2665) / 1639 e
 ../home/ubuntu/Desktop/spm12/tpm/TPM.nii
 ..s_MNI152Nlin2009cAsym/Template_0_GS.nii
 mni / default / COM
 medium (0.00,reg:1e-03;fwhm:60) / 3.00 / 1e-04
 medium(0.50) / none(0.00) / APRG(2.00) / medium(0.50) / medium(0.50) applied
 2 / 0 / 22 / optimal (1.00 0.30)
 1.00x1.33x1.33 mm³ > 1.00x1.00x1.00 mm³; 1.50³ mm³

Image and Preprocessing Quality:

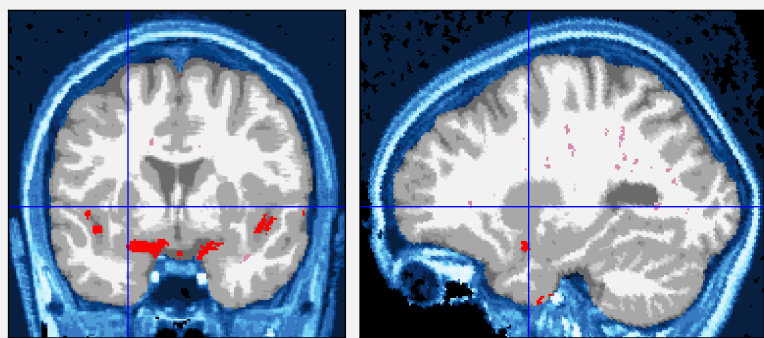
Resolution: 80.35% (B-)
 Noise: 85.70% (B)
 Bias: 92.32% (A-)
Weighted average (IQR): 82.55% (B-)
 Processing time: 25:35 min

Volumes:

	CSF	GM	WM
Absolute volume:	183	753	540 cm ³
Relative volume:	12.4	51.0	36.6 %
TIV:	1476 cm ³		



*.nii (Original T1)



p0*.nii (Segmentation)

